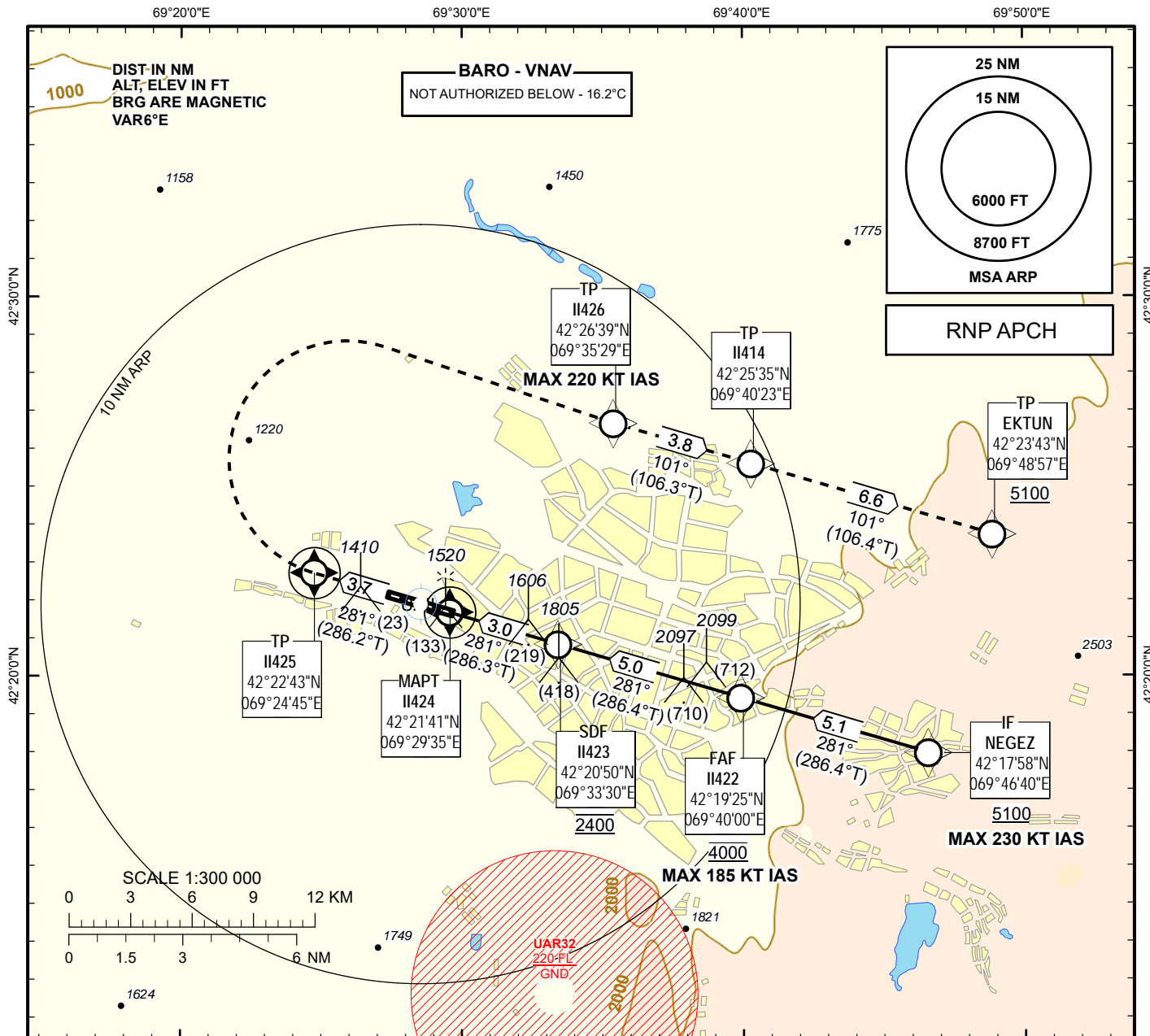


INSTRUMENT
APPROACH
CHART - ICAO

AERODROME ELEV 1387FT
HEIGHTS RELATED TO
AD ELEV

SHYMKENT TOWER 125.9
SHYMKENT ATIS (EN) 119.2
SHYMKENT ATIS (RU) 126.6

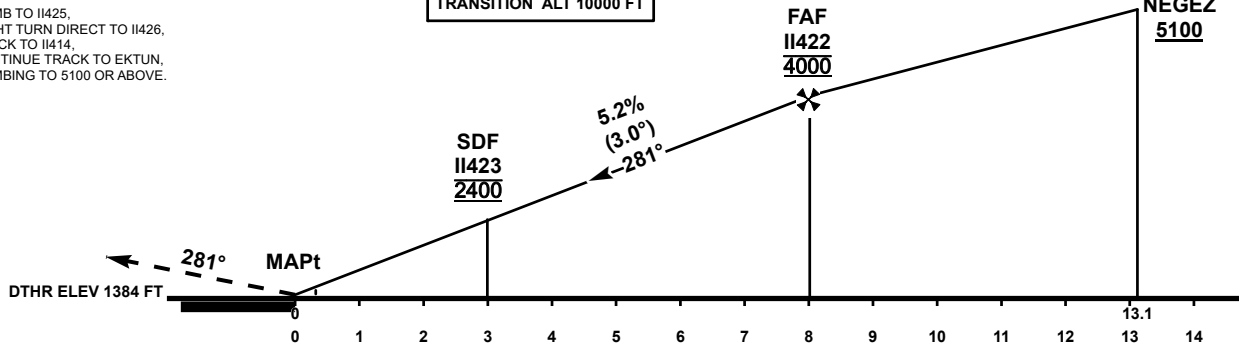
SHYMKENT
RNP
RWY 28



MISSED APPROACH:

CLIMB TO II425,
RIGHT TURN DIRECT TO II426,
TRACK TO II414,
CONTINUE TRACK TO EKTUN,
CLIMBING TO 5100 OR ABOVE.

TRANSITION ALT 10000 FT



OCA (OCH)		A	B	C	D
Straight	LNAV	1930 (543)			
	LNAV/VNAV	1650 (260)	1670 (280)	1680 (290)	1690 (300)

GS	Kt	70	90	120	150	180
Rate of descent (5.2%)	ft/min	370	480	640	800	960
FAF-MAPt 8.0 NM	min:sec	06:51	05:20	04:00	03:12	02:40

CHANGES: Editorial, OCA/H.

TABULAR DESCRIPTION

UAI RNP RWY28											
Serial Number	Path Descriptor	Waypoint Identifier	Fly - over	Course M(°T)	Magnetic Variation(°)	Distance NM	Turn Direction	Altitude FT	Speed KT	VPA (°)	Navigation Specification
010	IF	NEGEZ	-	-	+5.5	-	-	+5100	-230	-	RNP APCH
020	TF	II422	-	281(286.4)	+5.5	5.1	-	@4000	-185	-	RNP APCH
030	TF	II423	-	281(286.4)	+5.5	5.0	-	@2400	-	-3	RNP APCH
040	TF	II424	Y	281(286.3)	+5.5	3.0	-	@1437	-	-3	RNP APCH
050	CF	II425	Y	281(286.2)	+5.5	3.7	-	-	-	+1.4	RNP APCH
060	DF	II426	-	-	+5.5	-	R	-	-220	+1.4	RNP APCH
070	TF	II414	-	101(106.3)	+5.5	3.8	-	-	-	+1.4	RNP APCH
080	TF	EKTUN	-	101(106.4)	+5.5	6.6	-	+5100	-	+1.4	RNP APCH

WAYPOINT LIST

UAI RNP RWY28		
Waypoint Identifier	Coordinates	
EKTUN	422343.15N	0694857.00E
II414	422535.40N	0694022.65E
II422	421924.93N	0694000.30E
II423	422049.65N	0693330.43E
II424	422140.61N	0692934.92E
II425	422243.05N	0692445.39E
II426	422639.21N	0693528.75E
NEGEZ	421757.76N	0694639.56E